

## **SUPPORTING INFORMATION**

**Title:** Polymorph of Dibenzo-24-crown-8 and its Mercury Complex

**Author(s):** A. Crochet\*, E. Kottelat, A. Fleury, M. Neuburger, K. M. Fromm\*

**Ref. No.:** Z201100065

## Supplementary materials:

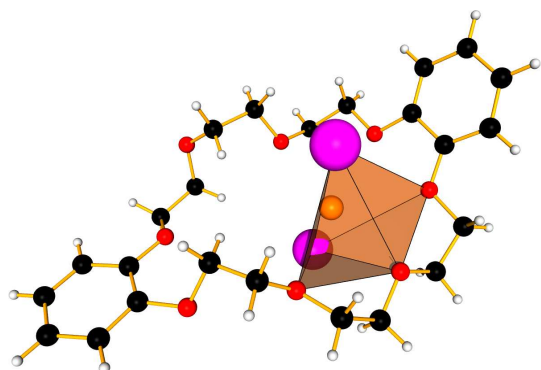


Figure S1: view of molecular structure of diiodomercury(II) dibenzo-24-crown-8 complex.

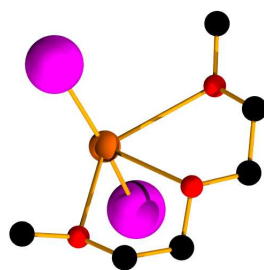


Figure S2: view of molecular structure of diiodo-(diethylene glycol dimethyl ether)-mercury(II)

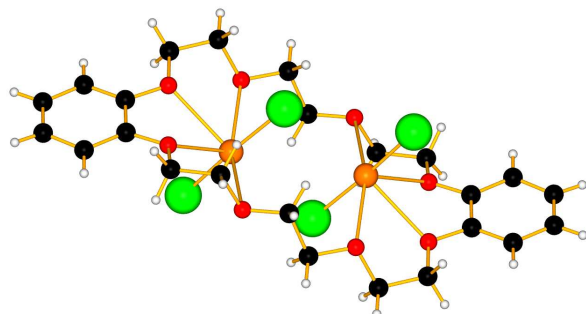


Figure S3: view of molecular structure of bis-dichloromercury(II)-dibenzo-24-crown-8 complex.

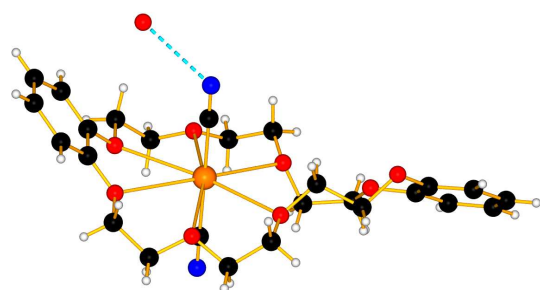


Figure S4: view of molecular structure of dicyanomercure(II)-dibenzo-24-crown-8 complex.

Tableau S1: Comparison of different mercury halides complexes.

	<b>2</b>	[HgI <sub>2</sub> (diglyme)]	[(HgCl <sub>2</sub> ) <sub>2</sub> (DB24C8)]
Hg-X (Å)	2.6019(9)	2.598(2)	2.306(4)
	2.596(1)	2.595(2)	2.326(4)
Hg-O (Å)	2.935(7)	2.69(2)	2.77(1)
	2.707(6)	2.73(1)	2.64(1)
	2.902(7)	2.82(1)	2.717(9)
X-Hg-X (°)	167.71(3)	160.95(5)	175.0(1)
O-Hg-O (°)	58.7(2); 63.2(2)	62.0(4) 61.9(4)	57.6(3) 63.4(3)
O-CH <sub>2</sub> - CH <sub>2</sub> -O (°)	-67(1)	65(2)	67(1)
	77(1)	67(2)	1(2)
τ	0.78	0.62	/